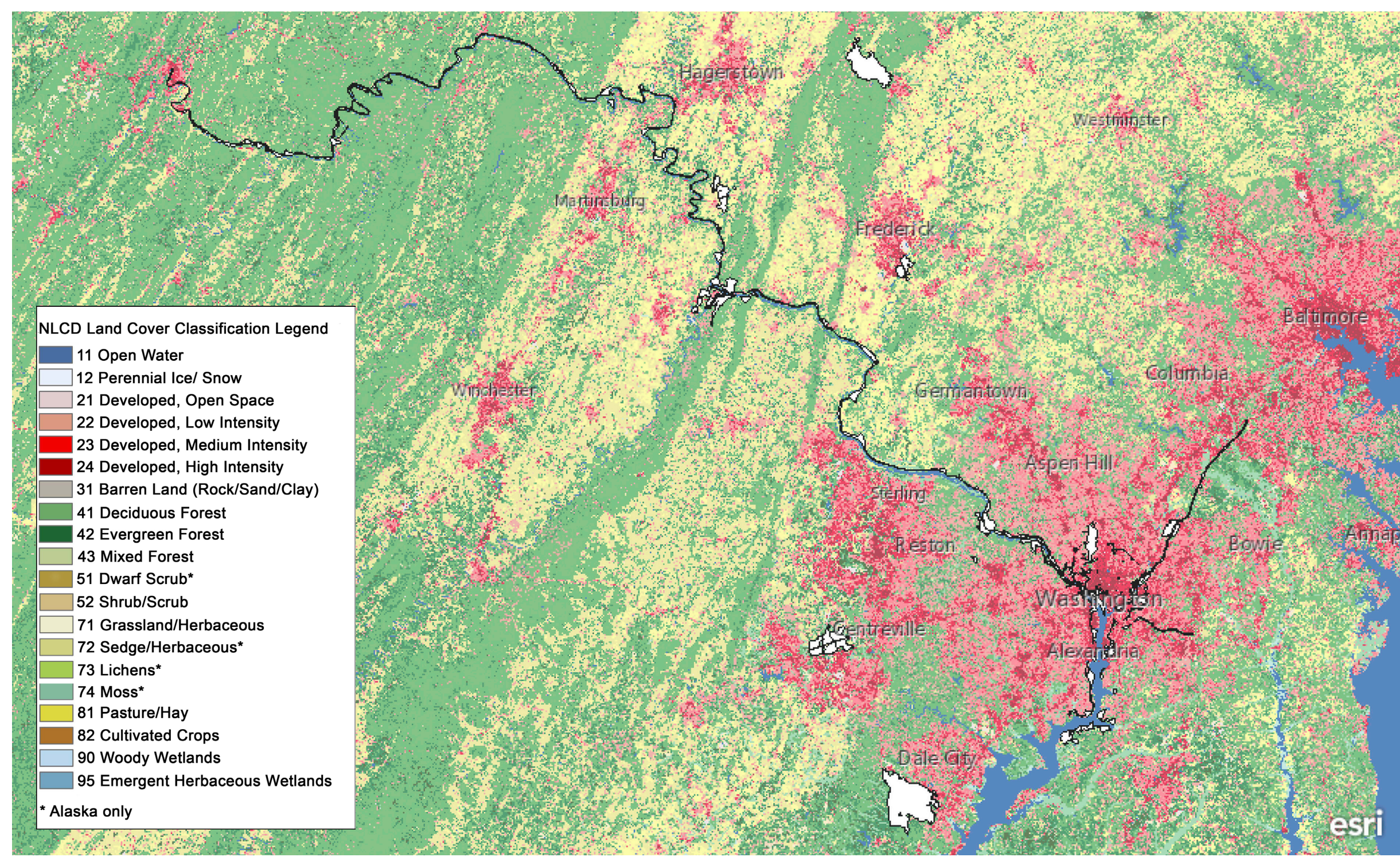


Beyond NRCAs: RAMS Informs Landscape-Level Management



Parks are Part of a Broader Landscape

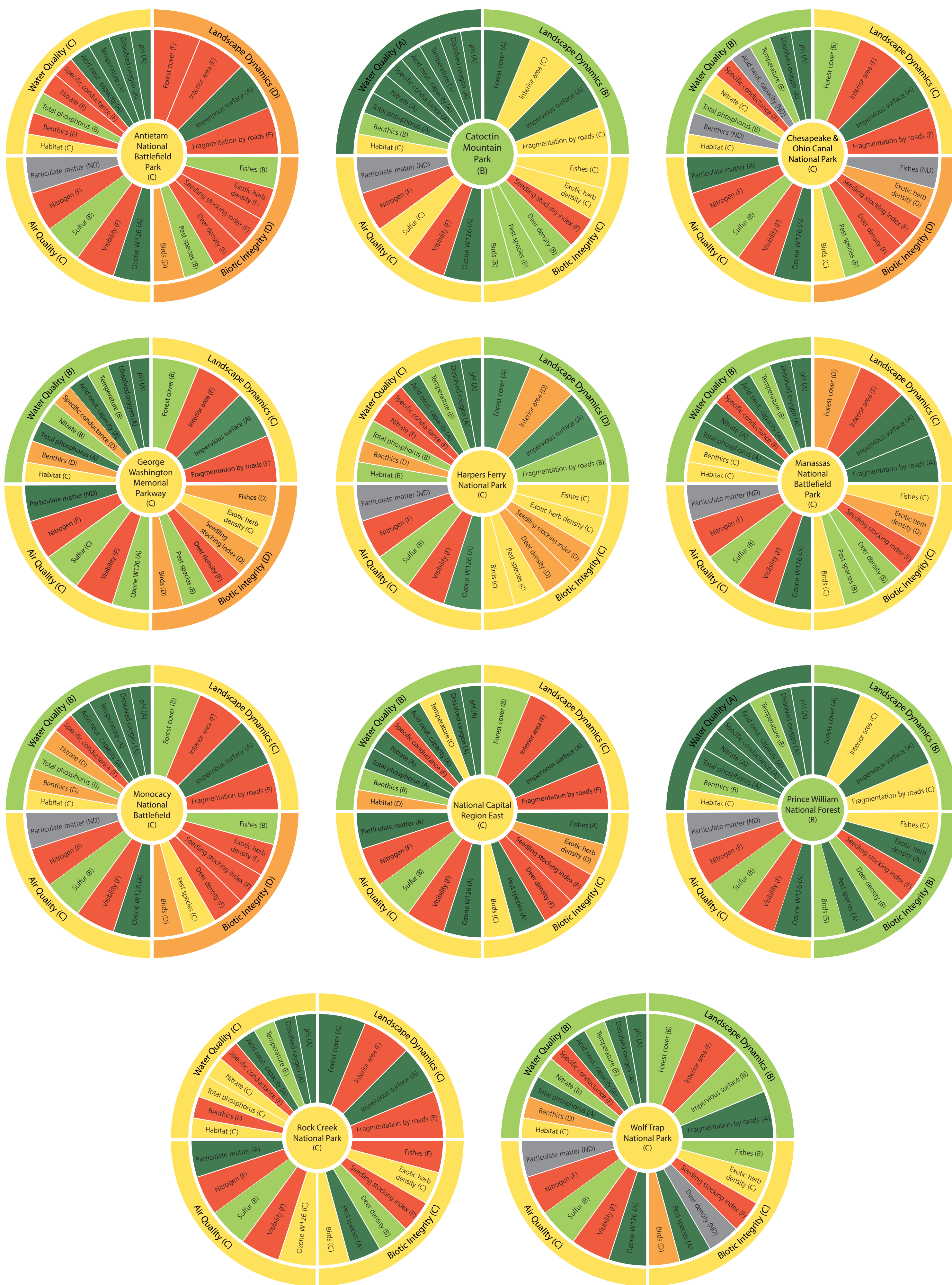
- Natural resources are not bound by park borders
- Actions outside of parks impact natural resource conditions within parks
- Stressors to natural resources may be shared across parks

Management Across Parks is Essential

- Collaborative management can effectively address shared stressors and priorities
- Requires identification of shared stressors and priorities across parks

RAMS Rolls Up Park Conditions to Landscape Level

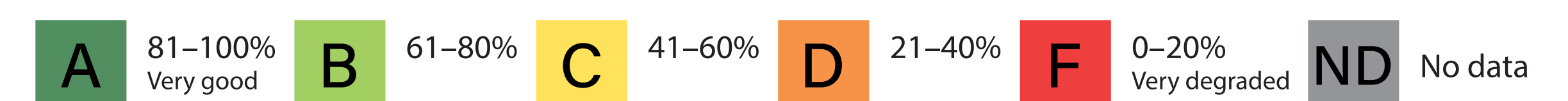
National Capital Region (NCR) Park-Specific RAMS Wheels



Natural Resource Conditions Across National Capital Region



What do the scores mean?



Current Conditions in NCR

- Maintain condition for indicators in “Very good” condition, for example:
 - pH in water
- Prioritize landscape-level management for “Degraded” indicators, for example:
 - Seedling stocking index and Deer density
 - Exotic herb density

Landscape-Level RAMS Assessments:

- Identify shared strengths and stressors across parks
- Help NCR managers identify shared priorities
- Inform collaborative management across parks

Next Steps:

- Facilitate NCR park-stakeholder collaborations through RAMS workshops to identify outside-of-park conservation actions stakeholders can implement
- Use RAMS beyond NCR to benefit other landowners and Networks