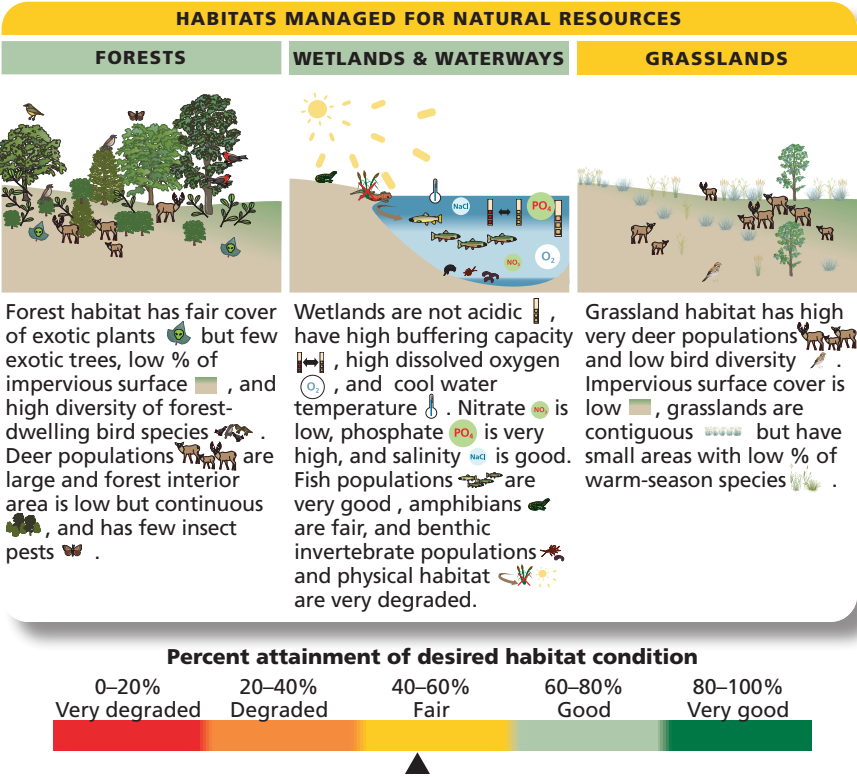




A relatively new approach to assessing and reporting on park resource conditions, Natural Resource Condition Assessments (NRCAs) evaluate current conditions for a subset of natural resources and resource indicators in national parks. Over the next several years, the National Park Service (NPS) plans to fund a NRCA project for each of the ~270 parks served by the NPS Inventory and Monitoring Division.

Habitats in Manassas National Battlefield Park are in fair condition overall. Forests were in good condition, with low forest interior area and large deer populations balanced by good bird diversity and continuous forest cover. Wetlands and waterways were also in good condition, with good pH, buffering capacity, and dissolved oxygen but high phosphate and degraded stream biological diversity. Grasslands were in fair condition, with large contiguous areas but large deer populations and low bird diversity.

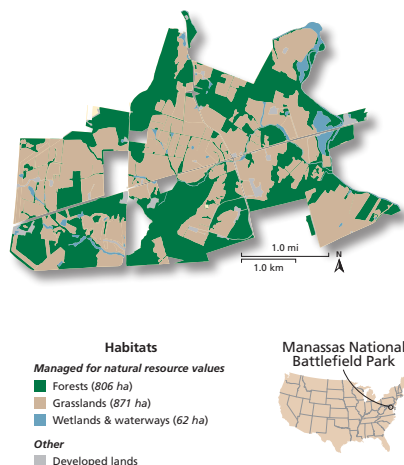


The habitat-based natural resource condition assessment is area-weighted. Areas of each habitat are given below:

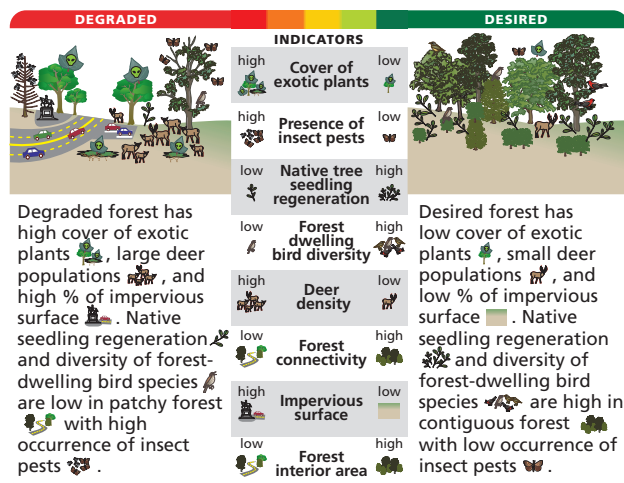
- Forests: 806 ha
- Wetlands & waterways: 62 ha
- Warm-season grasslands: 871 ha

Habitat framework

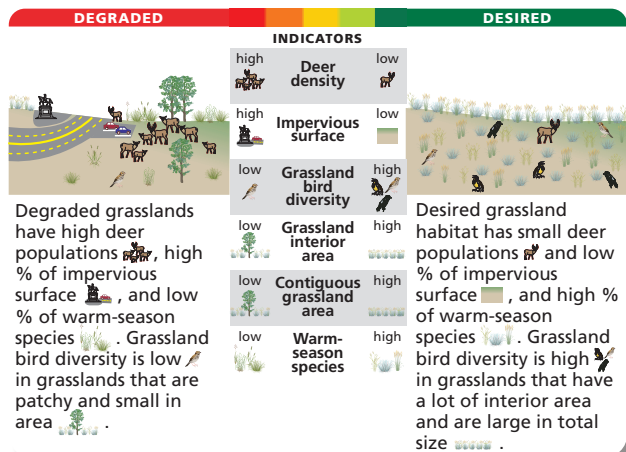
Habitats within the park were defined as being managed for natural resource values. A habitat map was created and desired/degraded conditions were defined for each of the three defined habitats. Metrics were then assigned to these habitat types, compared to established thresholds, leading to the condition assessment of each habitat.



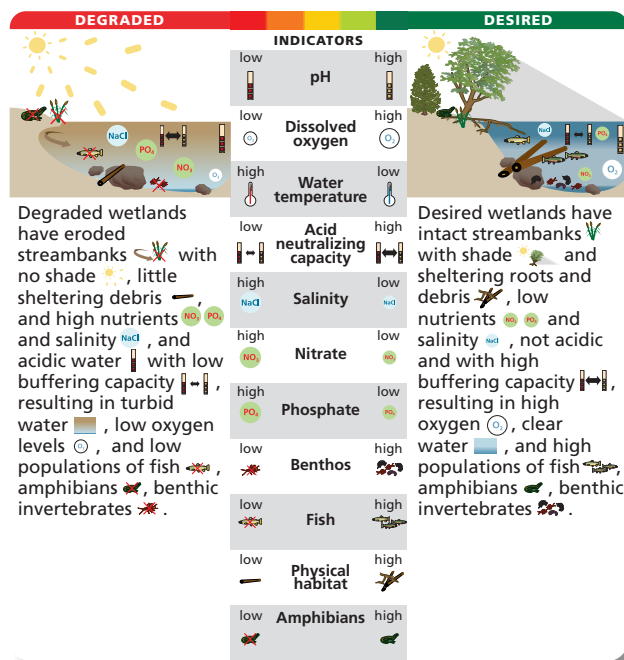
FORESTS



GRASSLANDS



WETLANDS & WATERWAYS



For more information, please visit the Park's Visitor Center or call 703-361-1339.

Manassas National Battlefield Park
National Park Service
www.nps.gov/mana

Developed in collaboration with:

National Capital Region Network
Inventory & Monitoring Program
National Park Service
science.nature.nps.gov/im/units/nrcn/



Integration & Application Network (IAN)
University of Maryland Center for Environmental Science
www.ian.umces.edu