



social
impacts



ecological
outcomes



partner
satisfaction

Integration & Application Network 2015 Report Card

Reflections on social impacts, ecological outcomes, and partnerships

from the beginning

The Integration & Application Network (IAN) is a collection of scientists committed to accomplishing positive environmental change through scientific synthesis, engagement, and communication. IAN is a component of the University of Maryland Center for Environmental Science (UMCES), an institution formed in 1925.

UMCES has redefined scholarship in terms of discovery, integration, application, and teaching. IAN was launched in 2002 as an integral part of UMCES to specifically address the scholarship of integration and application. Since 2002, IAN has evolved into a regional, national, and global leader in using science for better environmental decision-making.

tracking our progress

IAN staff regularly work with a broad range of partners and stakeholders to produce report cards and assessments for regions around the world. IAN scientists have developed a rigorous process for assessment which we have turned inward to assess our own status; thus, this IAN report card. We established indicators and thresholds for three broad categories that represent our external goals: social impact, ecological outcomes, and partner satisfaction.

In addition, we assessed our internal goals: financial viability, career development and training, roles and responsibilities, and flexibility in the workplace. This is the initial IAN report card effort, but annual iterations will continue to develop and evolve the indicators and scores so that we can better track our progress toward achieving our vision—creating a world where science is used to make smart environmental choices.

the future of IAN

The effort to create this inaugural IAN report card has helped us define what is important to our team. As such, the process of developing the report card has already proved invaluable. Examples include the addition of a professional development category for annual reviews and developing a partnership with the College of Exploration as external evaluators. Future IAN report cards will be

expanded to include our University of Maryland Center for Environmental Science at Chesapeake Bay Program employees. In addition, we envision creating a website that supports the printed report card. The IAN report card will help us maintain accountability to our 2017 IAN Strategic Plan and External Advisory Committee.

The IAN team brings together an abundance of expertise, enthusiasm, and commitment to make a difference.





IAN by the numbers

15 ecosystem health assessments completed

15 out of 17 partners reported being very satisfied or satisfied with their IAN partnership

718 project partners

81 Blogs

88% IAN staff satisfaction

8 years of Maryland Coastal Bays Report Cards

20 IAN staff

10 years of Chesapeake Bay Report Cards

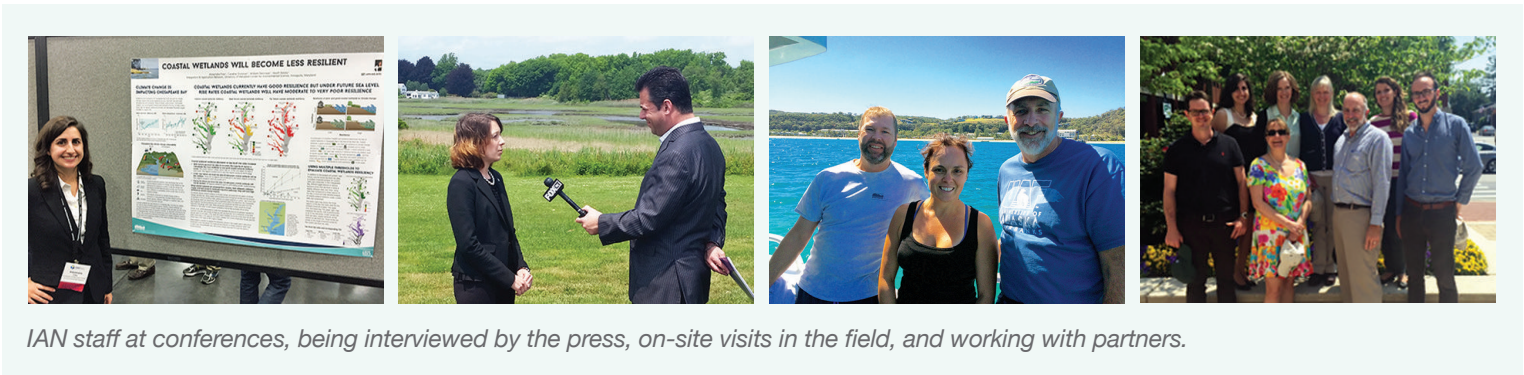
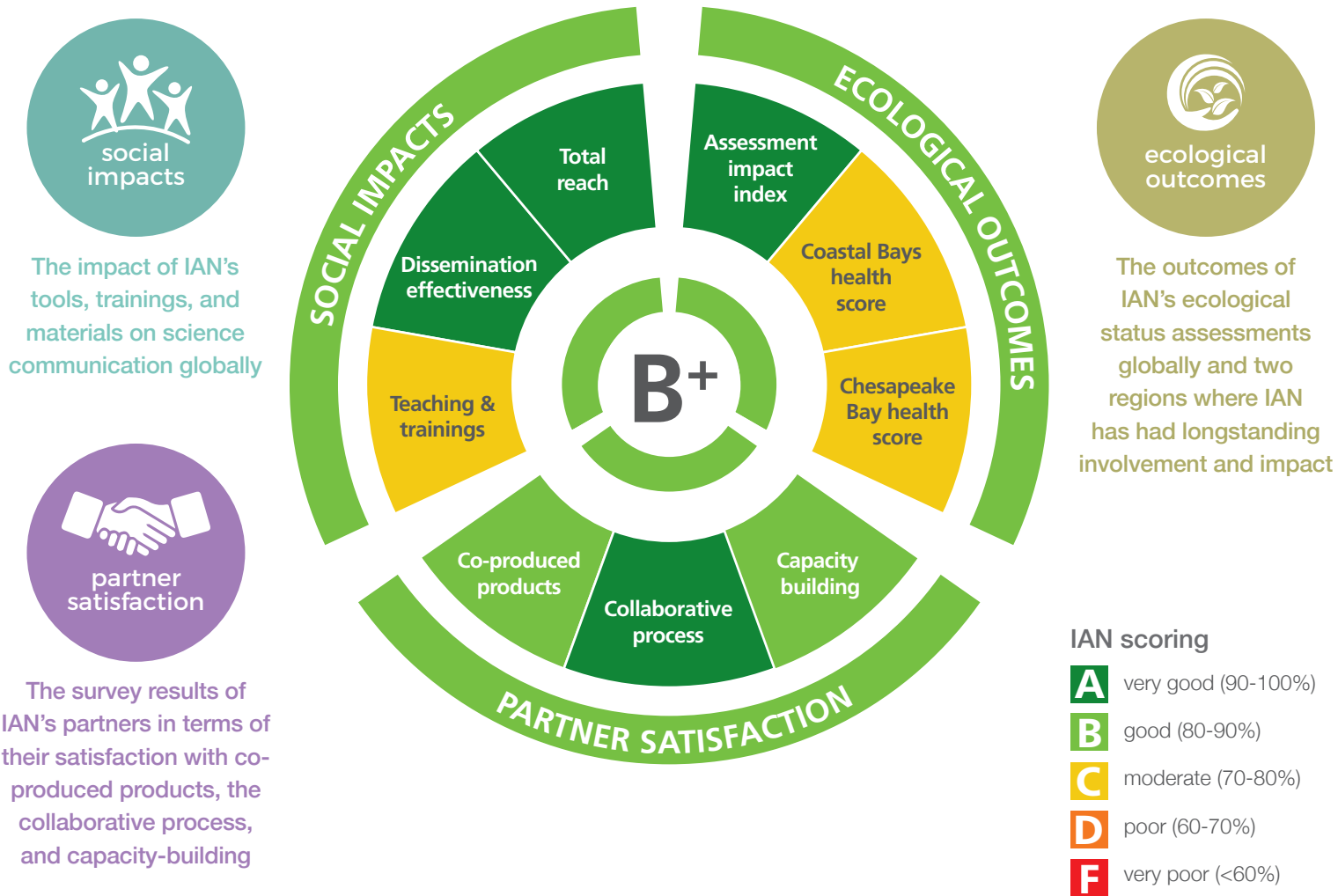
5,499,867 symbols & images downloaded from IAN's free libraries

582,466 unique page views




initial IAN report card results

Overall, the IAN report card grade for 2015 was a B+. Very strong partner satisfaction and above average social impacts offset the average ecological outcomes indicators. The strongest category for the IAN report card was the partner satisfaction category. Most partners were very satisfied with the IAN staff, the products IAN produced, and the way IAN engaged them in a collaborative process.

The social impact of IAN products and teaching was fairly strong. A large number of people were involved in IAN courses or training workshops. The total reach of IAN products was strong, but the dissemination effectiveness was not as high as we would have liked.



nine indicators were evaluated

CATEGORY	INDICATOR	MEASURE	SCORE
 <p>SOCIAL IMPACTS</p> <p>86%</p>	Total reach The number of Facebook, blogs, and media articles about IAN or IAN products.	Facebook posts (not including automatic postings) with goal of one per day, or 365: 582/365 = 100% Blogs posted with goal of two per week, or, 104: 81/104 = 78% Media articles with goal of one per week, or, 52: 107/52 = 100%	93%
	Dissemination effectiveness The number of IAN symbol and image library downloads, and the distribution of IAN products such as report cards and newsletters.	IAN symbol and image library downloads with the goal of 45,000 per year (2012-2014 average): 42,528/45,000 = 94% IAN symbol & image library registered users with the goal of 8,000 new users per year: 7,169/8,000 = 90% Printed copies of IAN Press products with the goal of 10,000 per year: 10,903/10,000 = 100%	95%
	Teaching and trainings The number of people directly interacting with IAN through courses, workshops, and project partnerships.	Students in semester-long courses with goal of 12 students in each course, 2 courses per year: 15/24 = 62% Students in short courses with goal of 100 students per year: 77/100 = 77% Project partners with goal of 1000 per year: 718/1000 = 72%	70%
 <p>ECOLOGICAL OUTCOMES</p> <p>85%</p>	Assessment impact index A rating based on the population, area, and iconic nature of the regions where IAN assessments and report cards have been conducted.	Total population of assessment areas: 145,000,000 Total area of assessments: 4,316,000 km ² Iconic region with the goal of one new iconic region per year: Mississippi River = 100%	100%
	Coastal Bays health score The annual ecohealth score of the Maryland Coastal Bays.	The 2015 grade from the Maryland Coastal Bays Report Card converted from 20-point scale to 10-point scale for grades: 79%	79%
	Chesapeake Bay health score The annual ecohealth score of the Chesapeake Bay.	The 2015 grade from Chesapeake Bay Report Card converted from 20-point scale to 10-point scale for grades: 76%	76%
 <p>PARTNER SATISFACTION</p> <p>89%</p>	Co-produced products A measure of how satisfied IAN partners were with their final product and their overall experience in co-producing the product.	Partner survey results = 15/17 satisfied with product; 15/17 satisfied with co-production	88%
	Collaborative process A measure of how effective IAN partners felt the collaboration was and if they were likely to make a referral for working with IAN.	Partner survey results = 16/16 clear short term goals; 15/16 clear long term goals; 15/17 likelihood of referral	94%
	Capacity building A measure of how comfortable IAN partners were with asking questions, and if partners thought the project built capacity and encouraged teamwork in their organization.	Partner survey results = 15/17 comfort asking questions; 13/17 capacity building; 16/17 teamwork enhanced	86%

Overall IAN score

An average of the scores for three categories: social impacts, ecological outcomes, and partner satisfaction.

87%

highlights of 2015

social impacts



report card websites launched



colloquium hosted & graduates trained

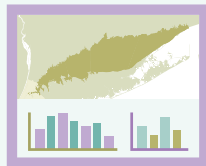
mobile apps created

The EcoHealth Report Cards website and the Chesapeake Bay Story website were created by IAN to allow wide dissemination of results, explain indicators, and provide maps and graphics to support report card scores. A Hawaii Forest Birds mobile application for identifying Hawaiian forest birds and bird calls was created by IAN for the National Park Service, and a How's The Beach? mobile application for South Carolina's beach water quality so swimmers could choose which beach to use.

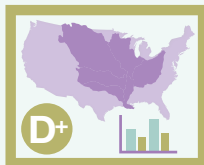
Graduate students and faculty from five Maryland universities in the Marine-Estuarine-Environmental Sciences (MEES) program gathered for an annual colloquium. IAN hosted the 2015 MEES Colloquium in Annapolis, Maryland, and IAN staff provided Science Communication Training. The guest speaker was Ricky Arnold, a MEES alumnus and NASA astronaut.



report card for the 4th largest watershed in the world



1st report card for the Sound



ecological outcomes

In June 2015, the IAN team produced the first Long Island Sound Report Card which was released simultaneously in Westport, Connecticut and Glen Cove, New York. IAN worked with scientists and state resource managers from New York and Connecticut to produce the printed report card as well as a web-based report card.

The IAN team partnered with America's Watershed Initiative to produce a comprehensive report card for the extensive Mississippi River Basin, released in St. Louis, Missouri in September 2015. Water supply, transportation, economy, flood control, recreation, and ecosystems were assessed with numerous stakeholders from around the basin over a three year period. Report card results were widely shared through national media.



partner satisfaction

USGS
8 climate science centers

US Department of the Interior



WWF
World Wildlife Fund
World Water Week

partner satisfaction

In a partnership with the U.S. Geological Survey, IAN began traveling to the eight regional Climate Science Centers to work with scientists to synthesize climate change impacts on ecological droughts. The first workshop in September 2015 was in Fairbanks, Alaska, a region of profound changes.

A partnership with the World Wildlife Fund and IAN was initiated in March 2015, and the first joint project was the Orinoco River Basin Report Card in Colombia, South America. The Basin Report Card Initiative partnership was launched at World Water Week in Stockholm, Sweden in September 2015.

we would love to work with you!

We love new challenges and we can work with you locally or collaborate with partners around the globe. Contact us today to get started: ian@umces.edu.

ian.umces.edu