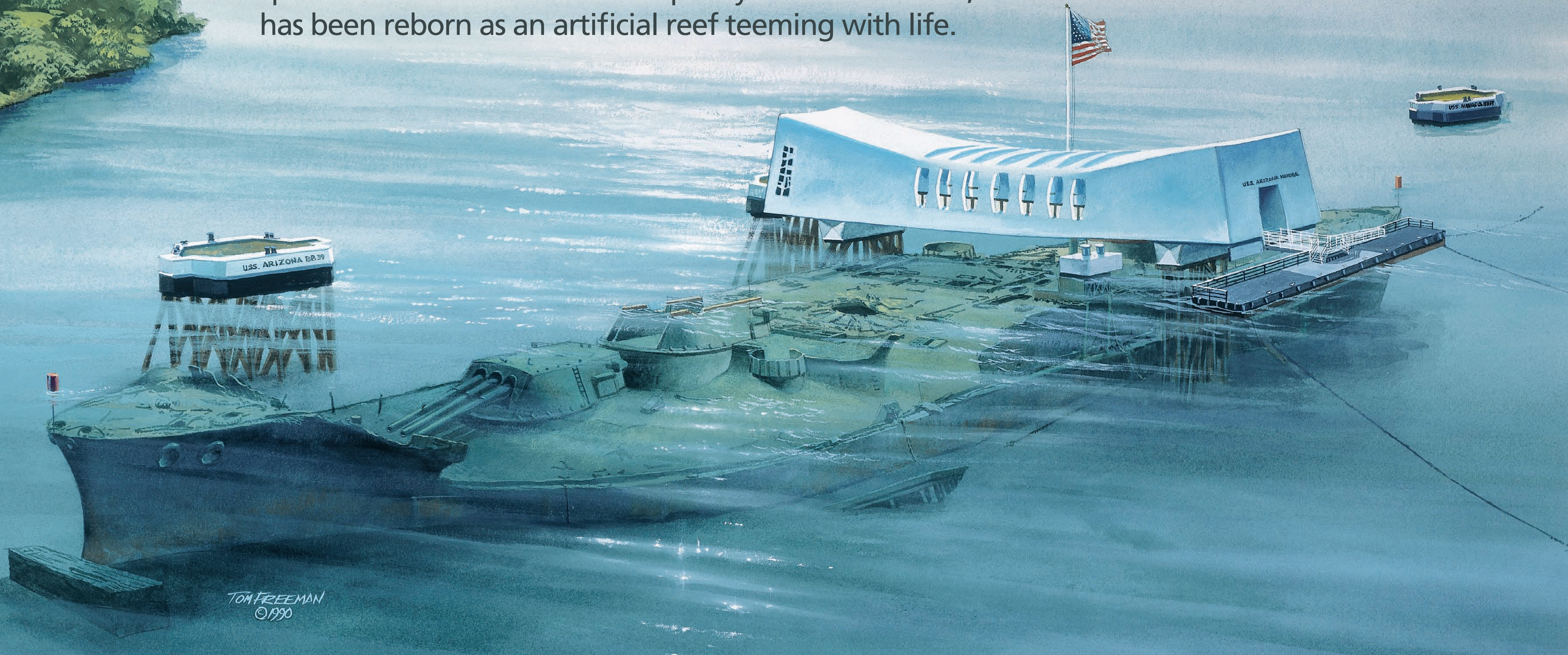


# USS *Arizona*

## Once a site of human devastation, now a haven for marine life.

Resting on the bottom of Pearl Harbor, the USS *Arizona* Memorial is now a place of healing and spiritual renewal. While water quality remains an issue, the wreck of the USS *Arizona* has been reborn as an artificial reef teeming with life.



### Pearl Harbor over time

#### pre-1800s

Ke awalau 'o Pu'uloa (Pearl Harbor) was a vast wetland that provided an abundance of seafood. Hawaiian legends say a mo'o (supernatural lizard deity) brought i'a hāmau leo, the native pearl oyster, to the area.



#### 1943

Pearl Harbor was the mobilization zone for WWII Pacific theater. An unfortunate side effect was the pollution of the Harbor with chemicals and heavy metals.



#### 1962–1980

In 1962, the USS *Arizona* Memorial was dedicated. In 1980, the operation of the Memorial was transferred from the US Navy to the National Park Service.

#### present

Nature is slowly reclaiming Pearl Harbor and the hull.



#### Pearl Harbor sediment blankets the hull

The USS *Arizona* sits on top of deep mud. Most of the wreck is covered with about seven inches (~18 cm) of silt, built up from river sediment.

*Upland agriculture and development sediment runoff settles on the hull.*

#### Life rebounds, even where disaster struck

Seven decades later, marine life rejuvenation in Pearl Harbor is represented by the diverse reef community growing on the hull.

*Corals, sponges, and small reef fish have made the hull their home.*

#### Oil continues to seep in small drops from the hull

The USS *Arizona* sank with 1.5 million gallons (5.7 million liters) of oil aboard. About 0.5 million gallons (1.9 million liters) remain.

*Oil leaks from the hull still rise to the surface of the water.*

#### New marine species are introduced by shipping

Increased wartime shipping activity accelerated the rate of new marine species introduction, some of which persist and threaten native species.

*This invasive red algae forms huge mounds and thrives where water quality is poor.*

#### Hull deterioration is influenced by marine life

Corals, sponges, invertebrates, and algae encrust parts of the USS *Arizona*. Over time, these organisms are colonizing the hull.

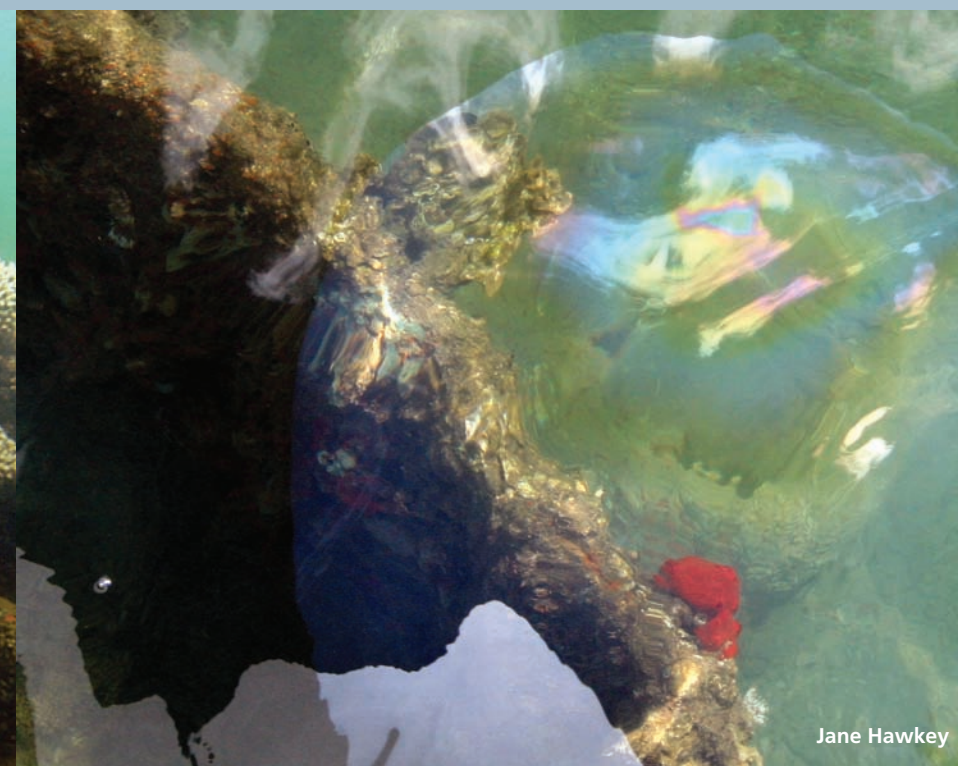
*Encrusting marine life grow around a portal on the ship's hull.*



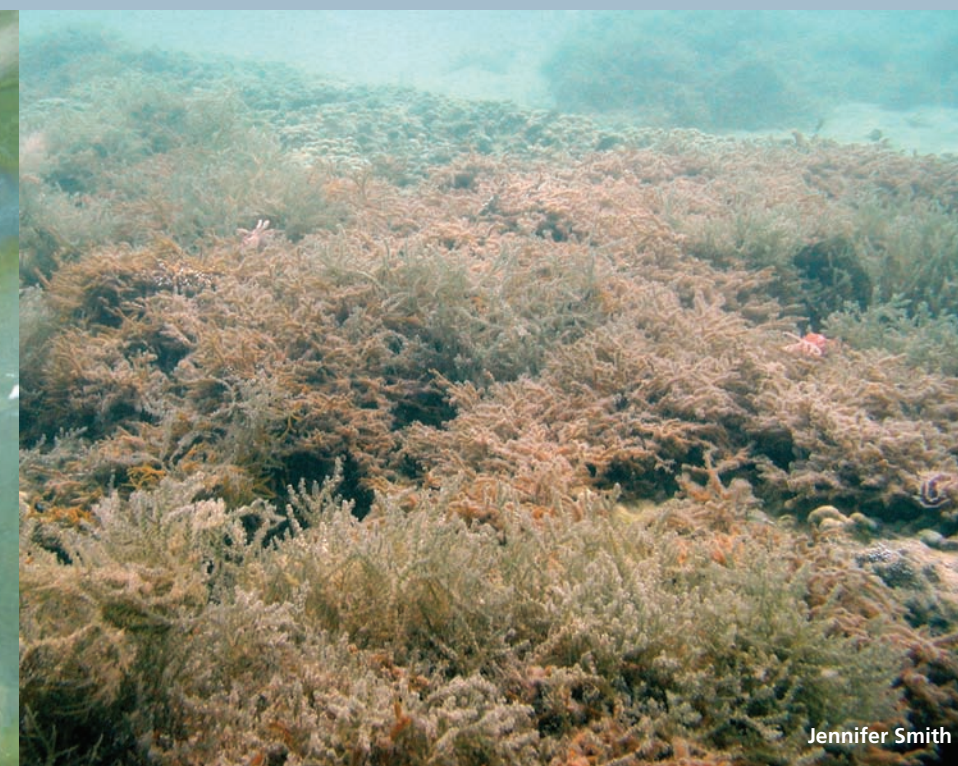
Brett Seymour



Brett Seymour



Jane Hawkey



Jennifer Smith



Brett Seymour

