

Integration and Application Network REPORT CARD 2022

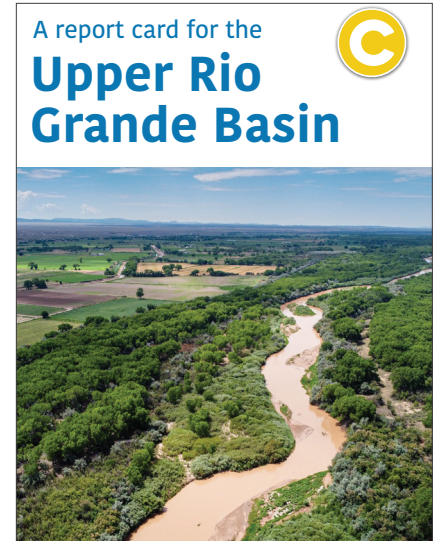


*An annual reflection on social impacts, ecological outcomes,
and partner engagement.*

Highlights from 2022

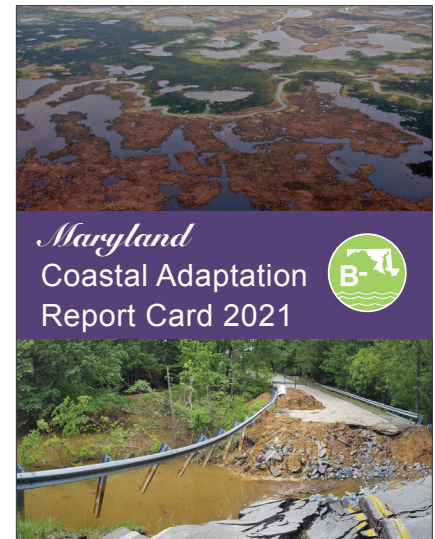
IAN and collaborators release the Upper Rio Grande Basin Report Card

This past November, IAN, in collaboration with its partners from World Wildlife Fund, Audubon Southwest, and The University of Massachusetts Amherst, published a socio-environmental health report card for the Upper Rio Grande. The report card covers a section of the Rio Grande that stretches from the river's headwaters in the Colorado Rockies to Fort Quitman, Texas. Indicators in the report card were selected to assess the health of four different values in the watershed: Water Quantity & Quality, Management & Governance, Society & Culture, and Landscapes & Ecology. Overall, the Upper Rio Grande received a C score, meaning that region is in moderate condition. Download the report card to learn more: <https://ian.umces.edu/publications/a-report-card-for-the-upper-rio-grande-basin/>.



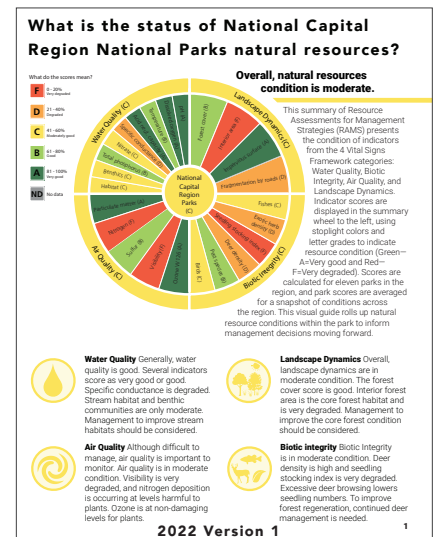
Maryland Coastal Adaptation Report Card provides groundwork for reporting climate change issues

IAN released the first-ever Maryland Coastal Adaptation Report Card on January 21, 2022. The report card features 15 indicators sorted into four categories: socioeconomic, ecosystem, planning, and flooding. Some indicators measured already meet, or are close to meeting, current adaptation goals, while others require significant investment to achieve adaptation goals. Maryland received an overall score of B- in coastal adaptation, indicating that we are well-prepared for ongoing and oncoming climate-related coastal changes, but that more work is needed. Download the report card to learn more: <https://ian.umces.edu/publications/2021-maryland-coastal-adaptation-report-card/>.



Resource Briefs offer snapshots of parks' conditions for future management action

IAN has a long-standing project partnership with the National Park Service (NPS). Recently, IAN published a series of NPS Resource Briefs, a continuation of the Natural Resource Condition Assessments. Each resource brief analyzes and presents the condition of important natural resources for each of the 11 National Capital Region National Parks, to guide local and regional management of these resources. Overall, the National Capital Region Parks received a score of C. The four grading categories include water quality, landscape dynamics, air quality, and biotic integrity. Download the report(s) to learn more: <https://ian.umces.edu/publications/what-is-the-status-of-national-capital-region-national-parks-natural-resources/>.

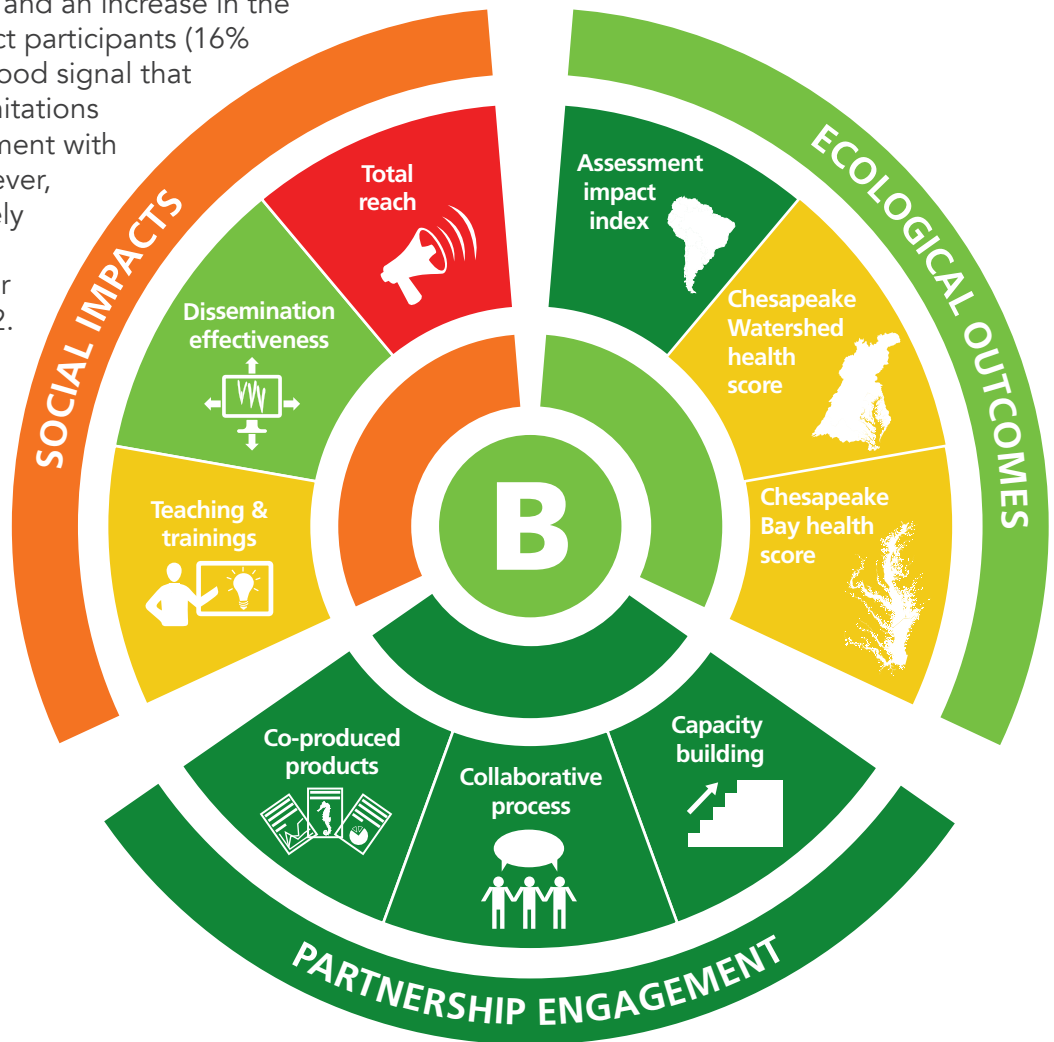


2022 Report Card results

Overall, the Integration and Application Report Card scored an 83% (B). This is an increase from last year's moderate grade of 79% (C+). The score for Ecological Outcomes was an 84% (B), a good score. Partnership Engagement scored a 100%, the best possible score. The Social Impacts category scored a 64% (D), a poor score. The lowest scoring indicator was Total reach, with a 41% (F) score. Four indicators had perfect (100%) scores: Collaborative process, Co-produced products, Capacity building, and Assessment impact index.

The Social Impacts category rose an entire grade from last year due to increased numbers of printed publication copies (32% to 62%) and an increase in the number of total estimated project participants (16% to 67%). These increases are a good signal that IAN is emerging from COVID limitations and getting back to full engagement with partners and stakeholders. However, Total reach is still scoring relatively low due to higher social media thresholds set last year and lower IAN in the Media scores for 2022.

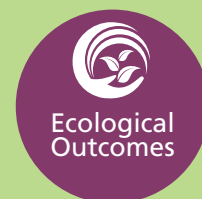
Ecological Outcomes stayed relatively the same compared to last year, with our new highlighted project region being the Rio Grande. Additionally, Partnership Engagement indicators all maintained high scores, following previous years.



IAN scoring

- A** Very good (90–100%)
- B** Good (80–90%)
- C** Moderate (70–80%)
- D** Poor (60–70%)
- F** Very poor (<60%)

PARTNER ENGAGEMENT **100%** SOCIAL IMPACTS **64%** ECOLOGICAL OUTCOMES **84%**



IAN Theory of Change. IAN's ultimate goal is to create positive environmental outcomes. In order to achieve these outcomes, we recognize that we need to have an impact on society, largely through effective engagement with key communities and organizations. To generate this societal impact, we need to work with partners who can help spread our messages and provide resources and expertise.

IAN—improving science communication &

In 2022, IAN partnered with organizations throughout the world to develop science communication products, create ecosystem health report cards, and build capacity both through in-person and virtual teachings and trainings.



2022

IAN by the numbers



symbols & images downloaded from IAN's free libraries

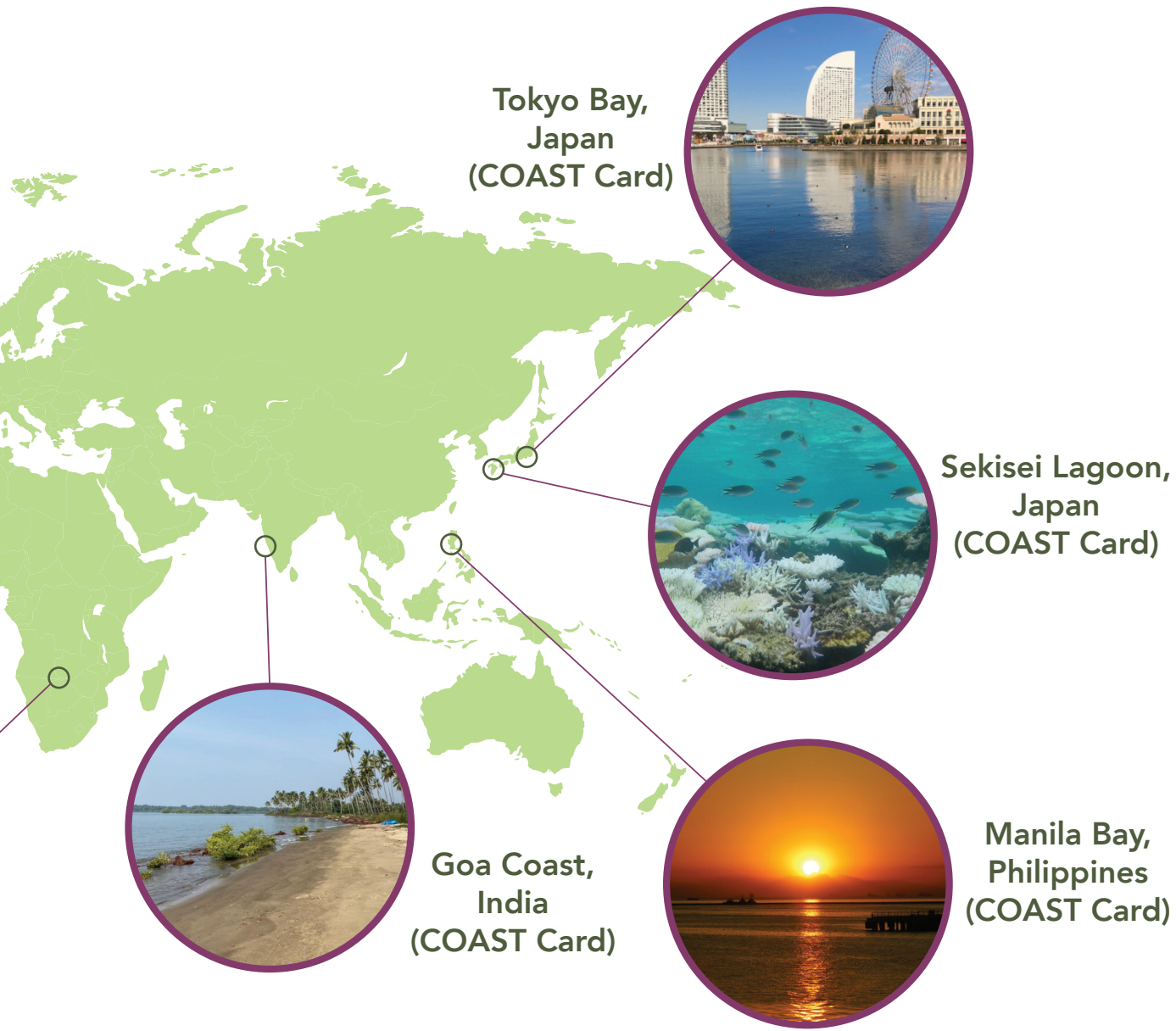
33

new symbols uploaded

7,591,242



making science accessible around the world



1,345 
project partners

69 
partner organizations

 **4 out of 4**
partners reported
being very satisfied
or satisfied with
their IAN partnership

 **18** ecosystem
health
assessments
completed

26
projects



65,500,000
people reached by media from
Chesapeake Bay & Watershed Report Card

46,200,000
person audience for media from
Upper Rio Grande Basin Report Card

2
full-semester
graduate-level
courses



New and current directions

Integrating environmental justice into IAN projects

IAN has actively incorporated environmental justice (EJ) work into many ongoing and future projects: mapping a Centers for Disease Control and Prevention/Agency for Toxic Substances and Disease Registry EJ Index for the Chesapeake Bay & Watershed Report Card, including Native peoples indicators in the Upper Rio Grande Basin Report Card, and using a heat vulnerability index in the Southeast Michigan Report Card series. IAN is committed to elevating awareness and providing tools for change that will positively impact communities facing environmental justice issues.

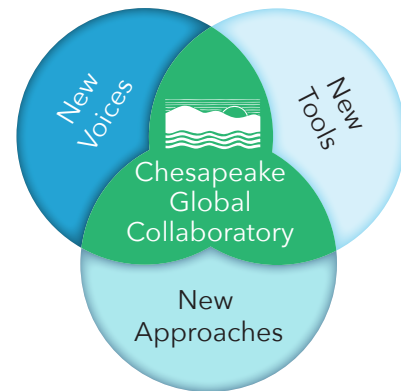


Superfund sites, like Sparrows Point in Baltimore, negatively impact communities, especially those that have been discriminated against. Photo by UMCES-IAN.

Collaborating with the Collaboratory

After months of listening sessions and outlining ideas, the University of Maryland Center for Environmental Science Chesapeake Global Collaboratory (CGC) is one step closer to becoming a reality. The vision for the Collaboratory is to give scientists, staff, partners, and stakeholders the strategic resources they need to solve environmental problems in the age of big data and other technological advances.

IAN will become part of this new initiative and will provide support on topics ranging from data analysis to stakeholder engagement to science communication.



Beyond using new tools for research, the Collaboratory also seeks to expand approaches with interdisciplinary research and increase diverse voices and partners for UMCES projects. Image by UMCES-IAN.

We would love to work with you!

Since 2002, IAN has worked to improve science communication around the globe. Over the years, staff members have partnered with organizations to help scientists, managers, and non-profits on a variety of projects. Whether you're looking to train scientists to improve their science communication skills, complete an ecosystem health report card, build an app for your followers, or improve the readability of your publications, IAN can help. If you're ready to create an impactful document, analyze your data in new ways, or have a greater impact on management decisions in your region, contact IAN to discuss how we can work together to accomplish your goals.

Contact us today to get started. Email ian@umces.edu or visit ian.umces.edu



Cover photos by Integration and Application Network (IAN). Map photos page four top left to bottom: IAN, IAN, Kaitlyn Dolan/Chesapeake Bay Program (Flickr, CC BY-NC 2.0), USAID Biodiversity & Forestry (CC BY-NC 2.0). Page five top right to bottom: Dr. Keita Furukawa, Dr. Kazuo Nadaoka, Lawrence Ruiz (wikimedia commons, CC BY-SA 4.0), and Dr. Dattesh Desai.