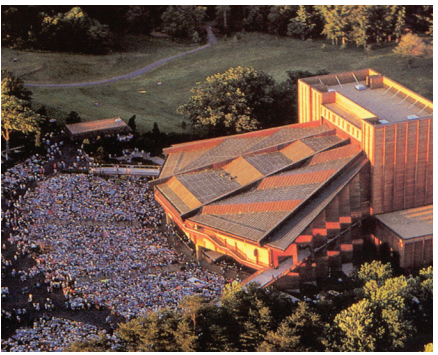


Wolf Trap National Park for the Performing Arts

Virginia

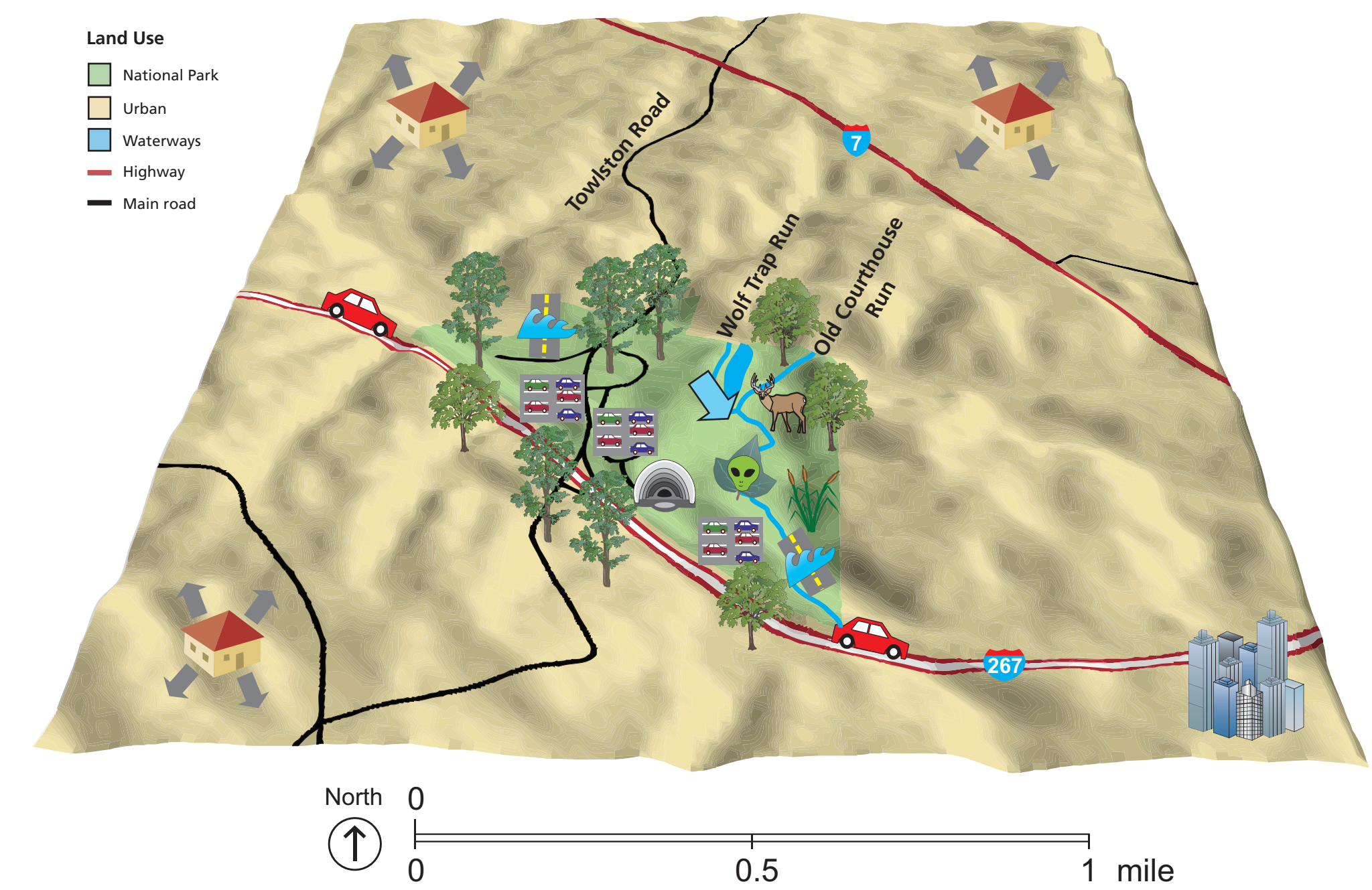
National Park Service
U.S. Department of the Interior

National Capital Region Network



Natural Settings Enhance the Performing Arts

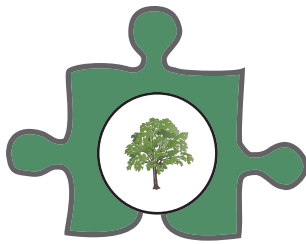
Wolf Trap National Park for the Performing Arts is the only National Park dedicated to the performing arts. Performance structures on the 130 acre property include a 7,000-person main stage. The park includes protected stream, meadow, and forest patches in the urban Washington, DC landscape. Noise from the Dulles Toll Road threatens the primary function of the park as a performance venue and is a major management concern. Water quality degradation, exotic species introductions, deer overabundance, and the encroachment of development against park boundaries are also issues of concern.



Resource Values	Resource Stressors
Freshwater flow: Wolf Trap Run and Old Courthouse Run	Development: suburban and urban
Cultural site	Major highways and roads
Forests: hickory and chestnut oak	Impervious surfaces
Wetlands	White-tailed deer: overpopulation
	Invasive/exotic plants
	Flooding

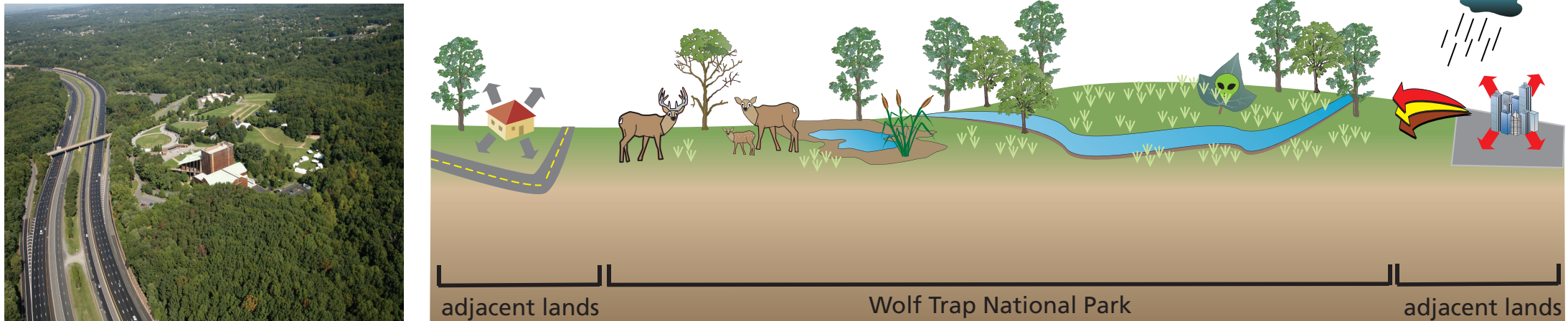


The performing arts and events of Wolf Trap.



Ecosystem Pattern and Processes

Natural settings provide suburban green space



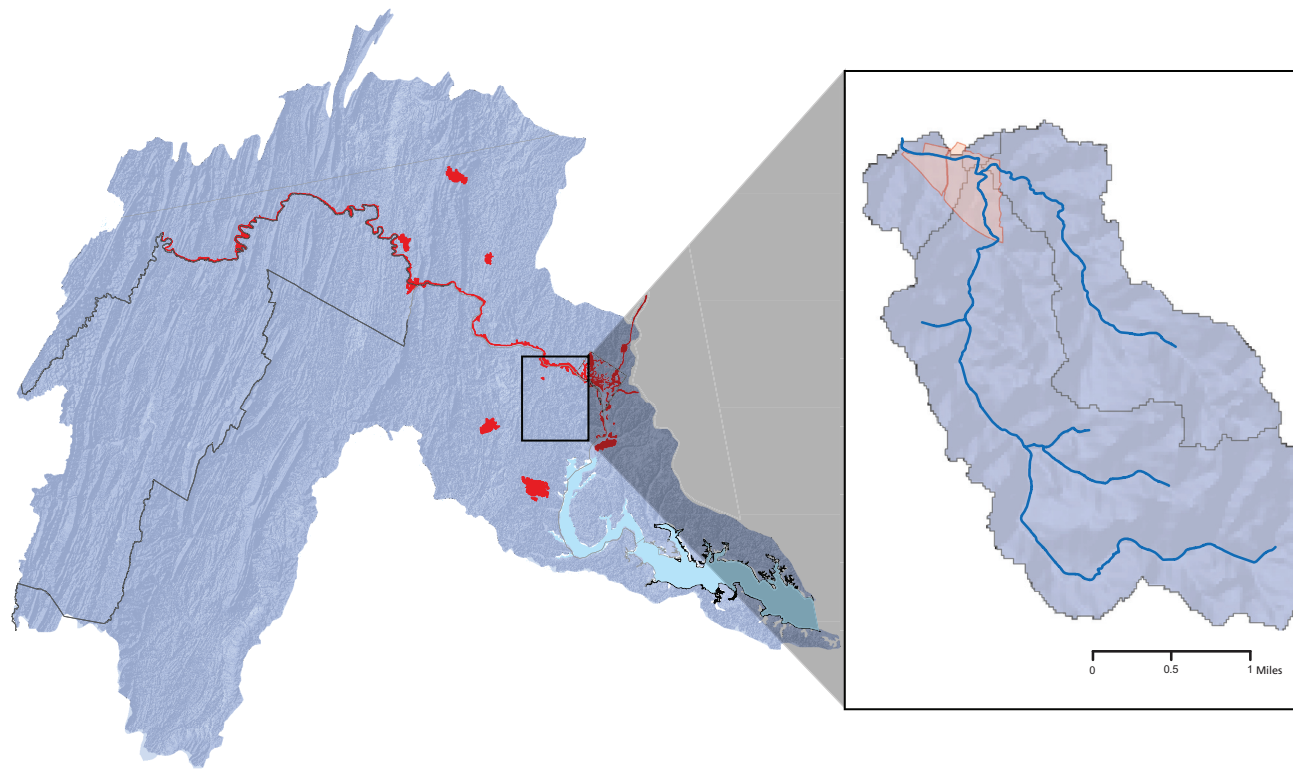
Wolf Trap National Park for the Performing Arts provides a great natural setting for the enjoyment of artistic performances. The park is surrounded by dense commercial and residential development, and has become a natural enclave in the middle of suburbia. The streams, various wetlands , and woodlands dispersed throughout the park are threatened by invasive plant species , increasing populations of deer , and stormwater runoff associated with the suburban setting. The park harbors a large variety of habitat for its small size including historic farmlands and upland meadows , and contributes to the overall water quality of Fairfax County, VA.



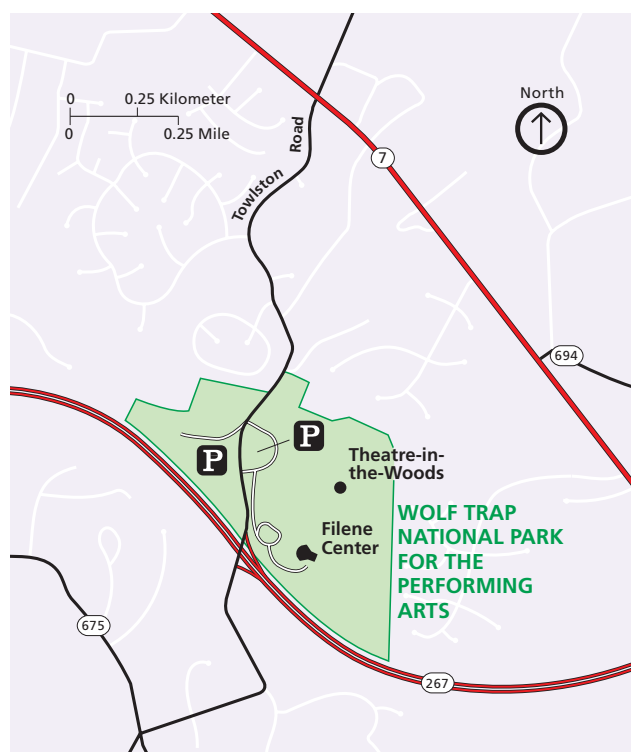
The green meadows, forests and creeks of Wolf Trap National Park for the Performing Arts offer both recreational and entertainment opportunities for countless urban and suburban residents.



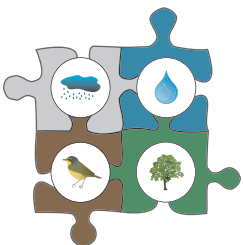
Wolf Trap National Park for the Performing Arts Watershed



(Above left) Potomac River watershed and National Capital Region Network parks (red). (Above right) Wolf Trap National Park for the Performing Arts watershed and boundary.



Park map showing major roads and waterways.



Vital Signs Monitoring

Assembling the puzzle

Park vital signs monitoring is designed to inform managers of the condition of water, air, plants and animals, and the various ecological, biological, and physical processes that act on those resources. This site-specific data will provide parks the information needed for ecologically sound management of the natural resources.

In Wolf Trap National Park for the Performing Arts, data are being collected on **Ecosystem Pattern and Processes**, with reference to park specific concerns as well as understanding regional issues.

Many of the sampling locations within the National Capital Region Network are in either highly urban locations or rural landscapes that are being converted into suburban landscapes. The vegetation and water sampling locations within Wolf Trap National Park for the Performing Arts are some of the only points located within a transition zone between highly urban and suburban landscapes. In addition to providing a unique sampling location, this park has become a natural enclave within this densely-developed zone, providing residents opportunities for an afternoon stroll, a picnic, or an outdoor concert.

NATIONAL CAPITAL REGION INVENTORY & MONITORING PROGRAM
National Park Service
www.nps.gov/cue

INTEGRATION & APPLICATION NETWORK (IAN)
University of Maryland Center for Environmental Science
www.ian.umces.edu