

Antietam National Battlefield

Natural Resource Condition Assessment

National Park Service
U.S. Department of the Interior

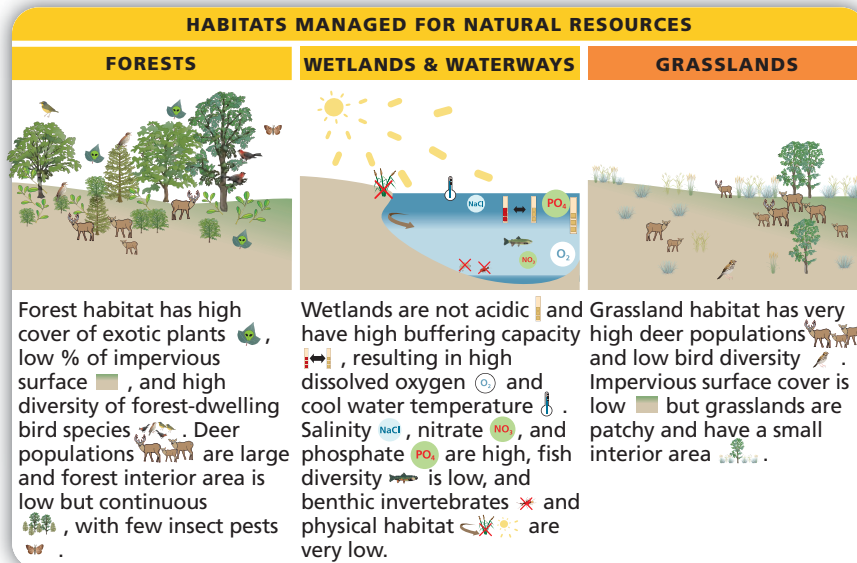


A relatively new approach to assessing and reporting on park resource conditions, Natural Resource Condition Assessments (NRCAs) evaluate current conditions for a subset of natural resources and resource indicators in national parks. Over the next several years, the National Park Service (NPS) plans to fund a NRCA project for each of the ~270 parks served by the NPS Inventory and Monitoring Division.

Habitats in Antietam National Battlefield are in good condition overall. Habitats managed for natural resources are in fair condition. Forests were in fair condition, with high cover of exotic plants and large deer populations balanced by good bird diversity and continuous forest cover. Wetlands and waterways were also in fair condition, with good pH and buffering capacity but high nutrients and low stream biological diversity. Grasslands were in poor condition, due to large deer populations, low bird diversity, and patchy nature.

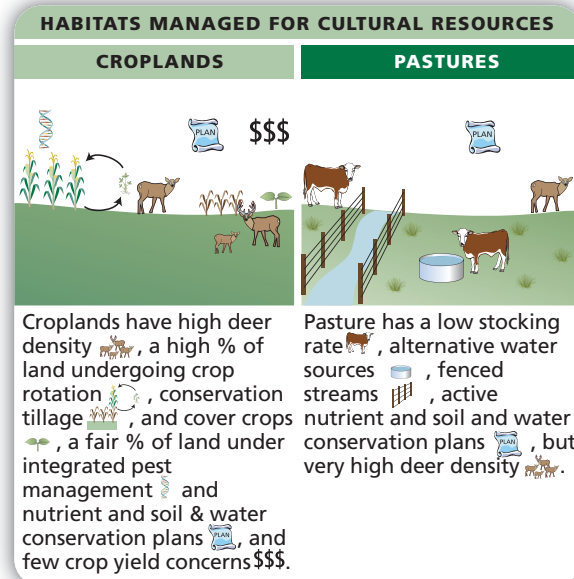
Habitats managed for agricultural values were in good condition overall. Croplands were in good condition, with good adoption of best management practices but also with large deer populations. Pastures were in very good condition with very good adoption of best management practices.

HABITAT-BASED NATURAL RESOURCE CONDITION ASSESSMENT OF ANTIETAM NATIONAL BATTLEFIELD



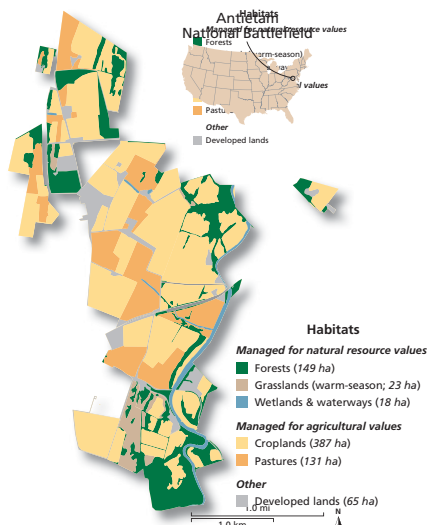
The habitat-based natural resource condition assessment is area-weighted. Areas of each habitat are given below:

Forests: 149 ha
Wetlands & waterways: 18 ha
Warm-season grasslands: 23 ha
Croplands: 387 ha
Pastures: 131 ha

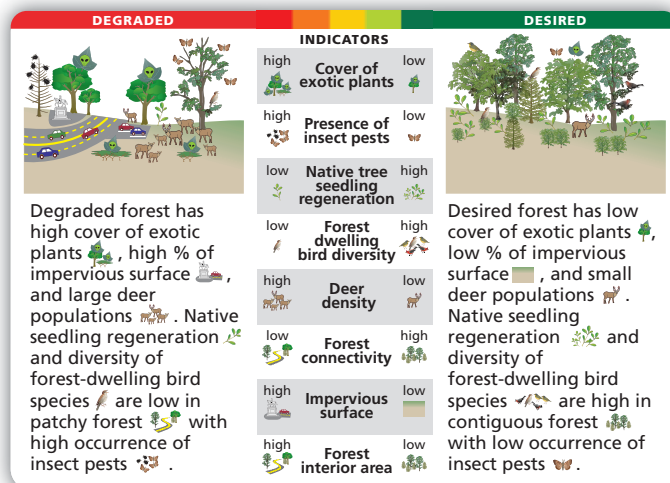


Habitat framework

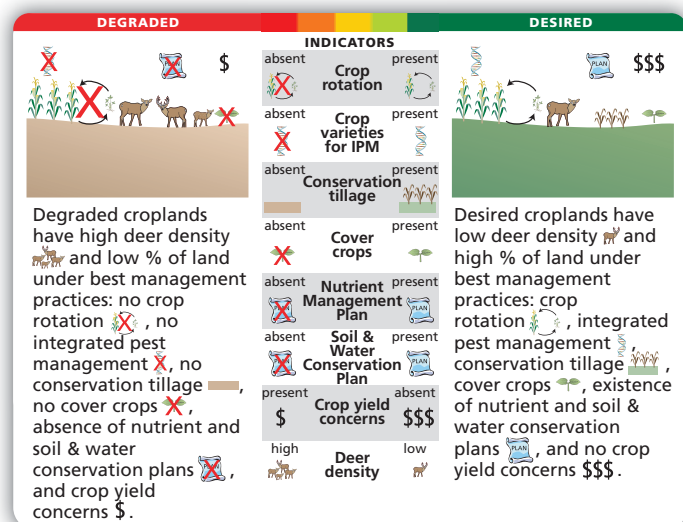
Habitats within the park were defined as being either managed for natural resource values or managed for agricultural values. A habitat map was created and desired/ degraded conditions were defined for each habitat. Metrics were then assigned to these habitat types, compared to established thresholds, leading to the condition assessment of each habitat.



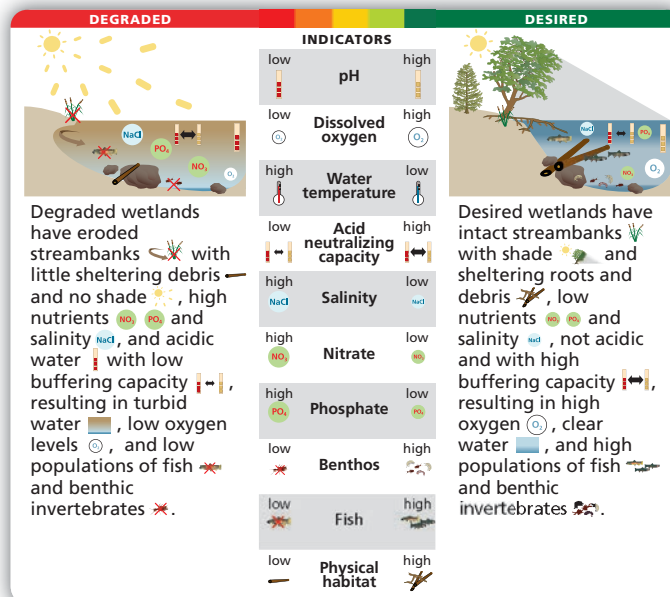
FORESTS



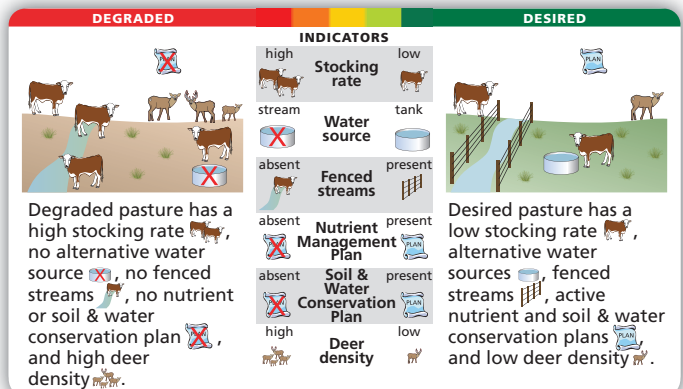
CROPLANDS



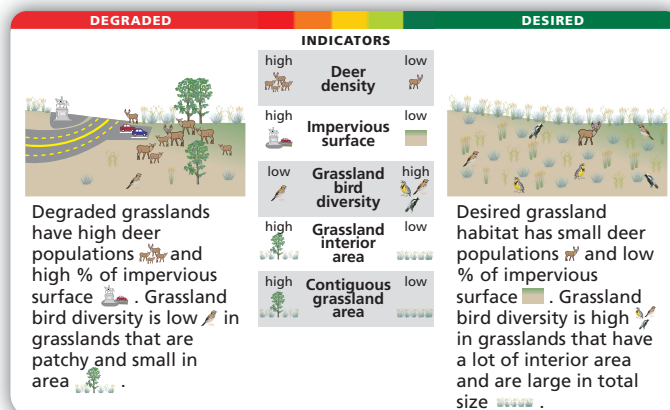
WETLANDS & WATERWAYS



PASTURES



WARM-SEASON GRASSLANDS



For more information, please visit the Park's Visitor Center or call 301-432-5124.

Antietam National Battlefield
National Park Service
www.nps.gov/anti

Developed in collaboration with:

National Capital Region Network
Inventory & Monitoring Program
National Park Service
science.nature.nps.gov/im/units/nrcn/



Integration & Application Network (IAN)
University of Maryland Center for Environmental Science
www.ian.umces.edu