

ELIZABETH'S LANDING LIVING SHORELINE—A COMMUNITY PROJECT

What is a living shoreline?

Living shorelines are engineered coastal ecosystems that mimic the functions and habitat provided by natural coastal marshes. Living shorelines are typically built with sand, stone, wood, and native marsh plants.

Why is one needed here?

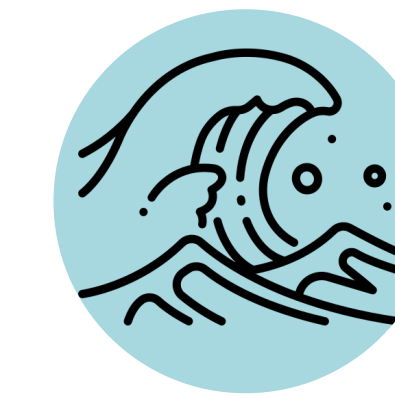
This community owned property and boat ramp was experiencing significant erosion caused by wave energy from wind and boat traffic. Coastal erosion is accelerating throughout Maryland due to rising sea levels and exacerbated by climate change.



For the community, by the community

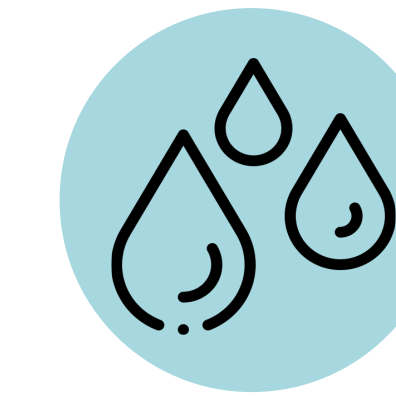
This living shoreline was installed and funded by the community of Elizabeth's Landing. Community members came together to assess the need for this living shoreline, raised funds, and planted the area with native marshes. Please cherish this natural resource and protect it for generations to come.

What are the benefits of living shorelines?



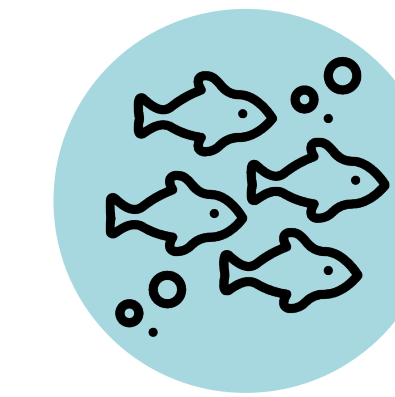
Coastal defense

Living shorelines absorb wave energy, unlike bulkheads, and the roots prevent the erosion of the soil, stabilizing the shoreline.



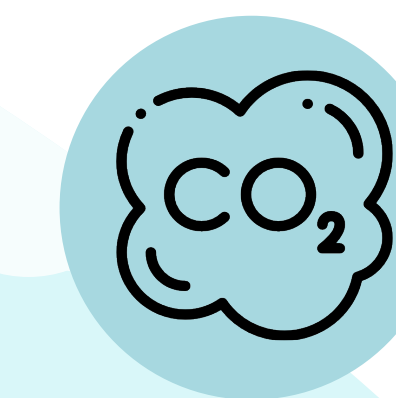
Improved water quality

Marshes trap sediments and nutrients, making the water clearer and cleaner.



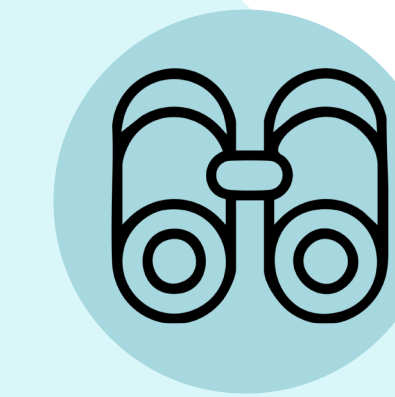
Increased biodiversity

Living shorelines provide habitat and food sources for fish, birds, and other wildlife.



Carbon sequestration

Plants capture the carbon in the environment and store it, which helps combat climate change by reducing the greenhouse effect.



Recreation

The diverse ecosystem that living shorelines create can be enjoyed through birdwatching, fishing, kayaking, and more.

Thank you to our
partners and sponsors:

